

OPTIMIZATION

www.gams.com

GAMS

High-Level Modeling

The General Algebraic Modeling System (GAMS) is a high-level modeling system for mathematical programming problems. GAMS is tailored for complex, large-scale modeling applications, and allows you to build large maintainable models that can be adapted quickly to new situations. Models are fully portable from one computer platform to another.

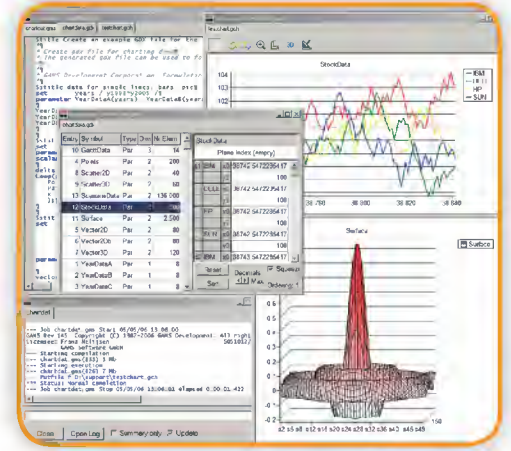
State-of-the-Art Solvers

GAMS incorporates all major commercial and academic state-of-the-art solution technologies for a broad range of problem types.

Day-Ahead Scheduling (DAS) Solver

DAS Solver, developed by the Power Systems Laboratory of Aristotle University of Thessaloniki, is an integrated software for the solution of the Day Ahead Scheduling of the Greek wholesale electricity market.

It uses advanced Mixed Integer Programming (MIP) modeling under GAMS/CPLEX to formulate and solve the Greek day-ahead electricity market



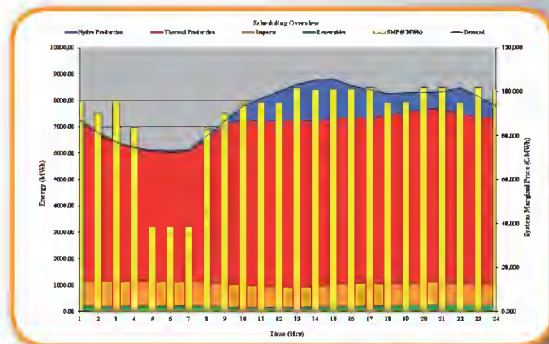
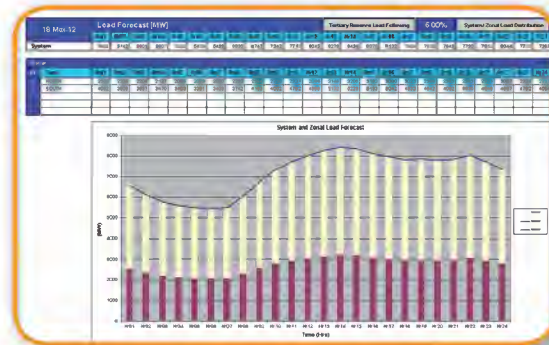
GAMS Integrated Developer Environment for editing, debugging, solving models, and viewing data.

Europe
GAMS Software GmbH
 Eupener Strasse 135-137
 50933 Cologne, Germany

phone
 +49-221-949-9170
 fax
 +49-221-949-9171
 mail
 info@gams.de
 web
 http://www.gams.com

USA
GAMS Development Corporation
 1217 Potomac Street, NW
 Washington, DC 20007, USA

phone
 +1-202-342-0180
 fax
 +1-202-342-0181
 mail
 sales@gams.com
 web
 http://www.gams.com



ARISTOTLE
 UNIVERSITY
 OF THESSALONIKI



For more information contact
 bakiana@eng.auth.gr